

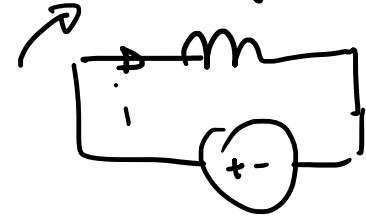
RETE DI POTENZA
INFINITA

$$f = 50 \text{ Hz}$$

$$V_e = 30 \text{ kV}$$

$$n = \frac{60 \text{ h}}{P}$$

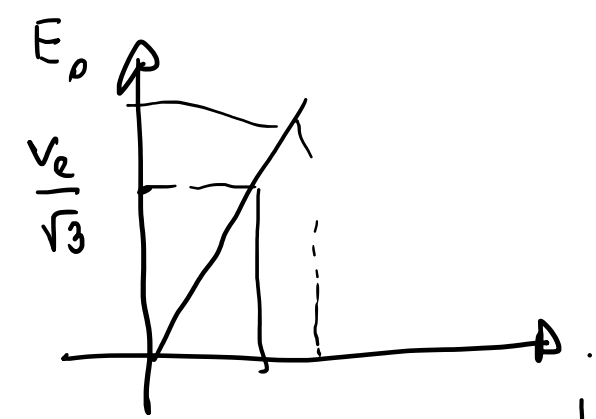
ω_m



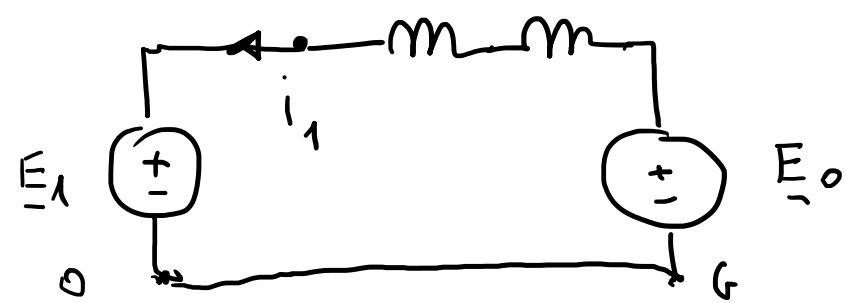
$$\underline{E}_0 = \underline{E}_1$$

$$\Downarrow$$

$$\underline{I}_1 = 0$$



$A_1 \quad L_S \quad R_S$



$$\underline{I}_1 = \frac{\underline{E}_0 - \underline{E}_1}{R_S + j\omega L_S}$$

$$|\underline{E}_0| = |\underline{E}_1|$$